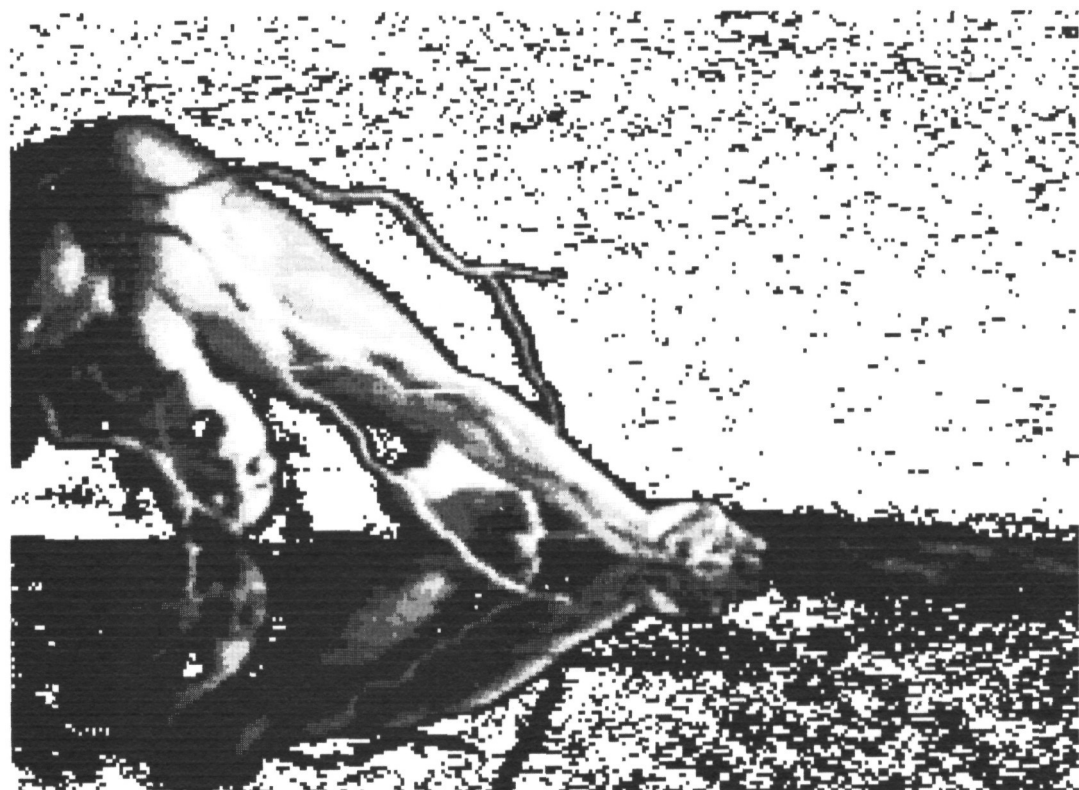
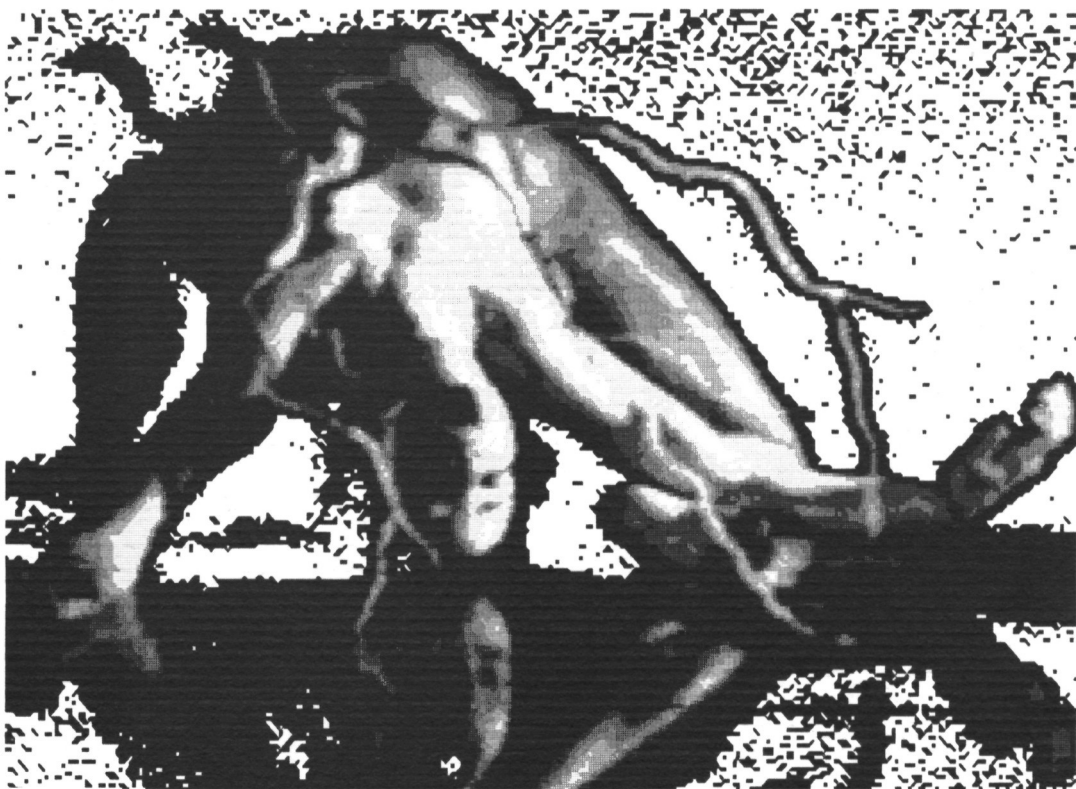


The following images are part of artist *Glenn Rothman's* computer enhanced photographs of dancer/choreographer Maureen Fleming.





In her recent work Fleming has been exploring areas where contemporary movement and dance intersect



with the meditative style of Japanese butoh. For these images Rothman has video taped Fleming's dance performances.



He then selects image frames, which he digitizes and enhances on the computer.

48-Cornfield Review