A black and white photograph of a stone archway leading to a courtyard with a grid-patterned wall. The archway is made of dark stone, and the courtyard beyond is paved with cobblestones. The wall in the distance has a grid pattern of small squares. The overall scene is dimly lit, with light coming from the courtyard.

Cornfield

R e v i e w

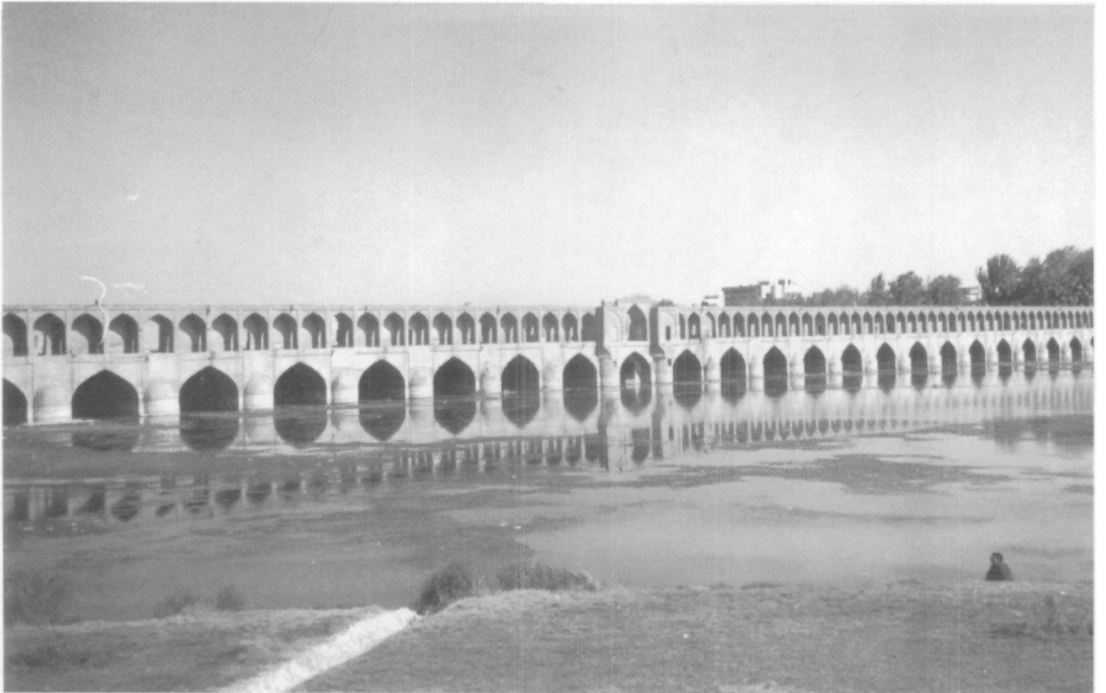
An Annual of the Creative Arts

Volume 19

2001-2002

Cornfield

Review



Volume 19 2001-2002 The Ohio State University at Marion

Cover design by Laura Behne and Brooke Wilson

Cornfield *Review*

Editors

Amber English

Rachael Johnson

Faculty Advisor

Jacquelyn Spangler

*The Editorial Board of the *Cornfield Review* consists of students and professors from the Marion, Mansfield, and Newark campuses of The Ohio State University. They are Stuart Lishan, Steve Buttermann, Amber English, Rachael Johnson, Brooke Wilson, Laura Behne, Jason Lichtenberger, Thomas Cloutier, Ben Waters, Merese Johnson, Shannin Bailey, and Ron White, Mike Anderson.

We would also like to thank Christine Lorenz for her assistance with the design and reproduction of the graphics.

For their support in making *Cornfield Review* an intercampus publication, we give special thanks to Jamrs Louks, Barbara McGovern, Elizabeth Caldwell, Susan Delegrange, and Dominic Dottavio.

Cornfield Review is published once a year as a joint publication of The Ohio State University at Marion, Mansfield, and Newark. The Editorial Board seeks quality writing and student artwork accepted from students and faculty between October 1 and March 1 and must be accompanied by a self-addressed stamped envelope. Please send no more than five poems, and limit fiction to 3000 words or less.

Table of Contents

Poetry

Jay Idle

Casanova and The Truth.....	1
When I was young and I could smile.....	2

Don Langford

Hovering in One Place.....	3
Autumn.....	4

Thomas Cloutier

You'll Never See This Anyway.....	5
Not Quite A Pointless Love Poem.....	6
Ego Tripping.....	7

Jeremy Secrist

Untitled.....	8
---------------	---

Collaborative Poem

Making Sense Yet?.....	9
------------------------	---

Laura Behne

Echoes of Water.....	10
Outside X Marks the Spot.....	11

Tina Barber

Southern Grandma.....	12
Me and Rose.....	14

Rachael Johnson

The Eternal.....	15
to be Young again.....	16

Ben Waters

Six O'Clock.....	17
The People Suck Limericks.....	19

Saretta Danials	
Kaguya Hime (Princess of the Moon Children).....	21
Dan Kiely	
Across the Room.....	23
On the Lake.....	24
Leaves.....	25
Stephen Butterman	
Missed Her Meanings.....	26
Those lovely Lobes.....	27
Douglas Lewis	
A Winter Poem.....	28

Fiction

Hank Osborne	
The Life.....	33
Laurie Wise	
Autumn Ages.....	39
Shannin Bailey	
Something New.....	45
Fred McKinney	
Measure of a Man.....	58
JoAnne Fitzgerald	
Camp, 1944.....	63
Cindy Fidler	
Make-up.....	67

Art Work

Shielda Ballantyne.....	13
Brianna Elam.....	2
Eric Evans.....	68
Rachael Johnson.....	11, 15, 18, 38
Jon Willey.....	8, 70, 71

Contributors69



photo submitted by Amber English

